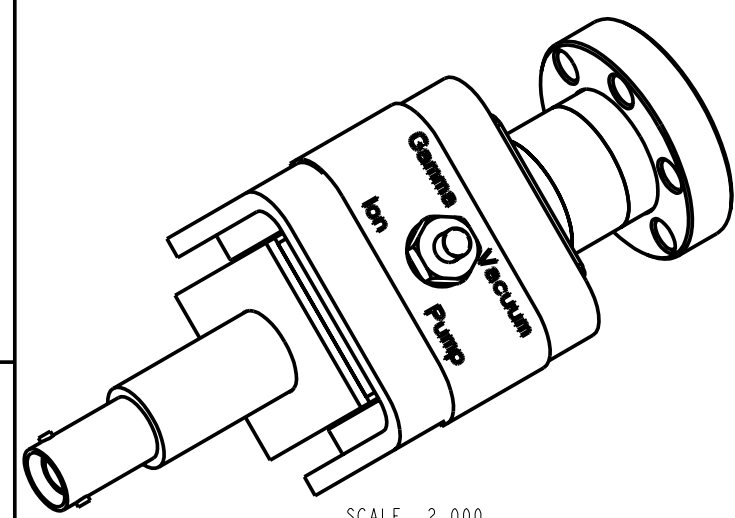
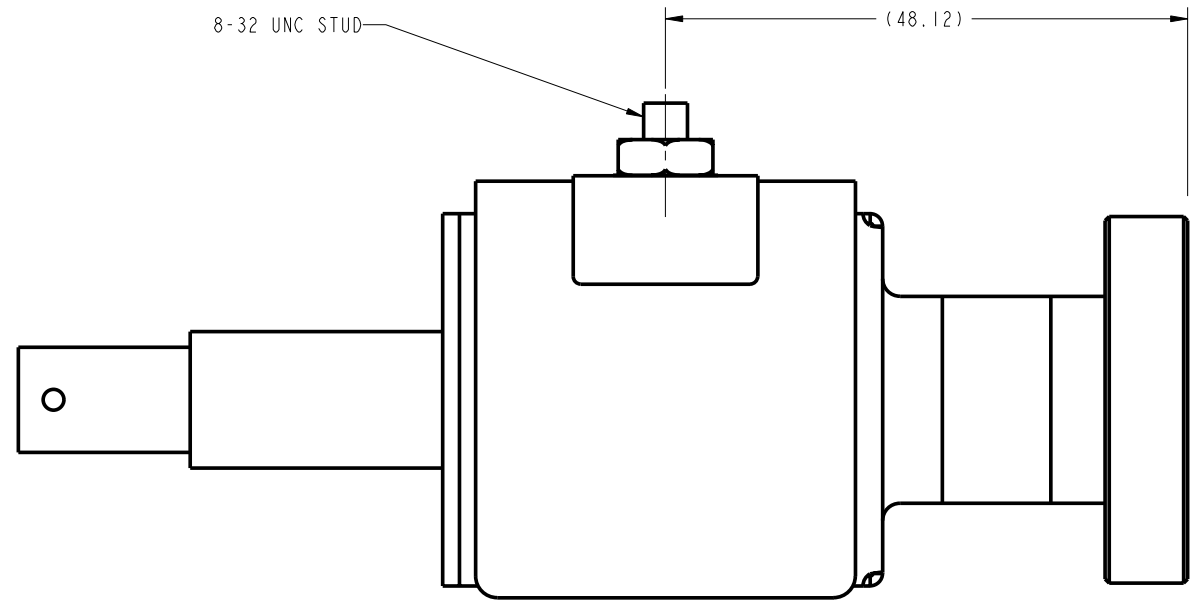


REVISIONS				
REV	CO #	DESCRIPTION	DATE	APPROVED
A	10.705	RELEASE	11-02-05	RDG

THIS DRAWING HAS BEEN GENERATED AND IS MAINTAINED BY PRO/ENGINEER CAD SYSTEM.

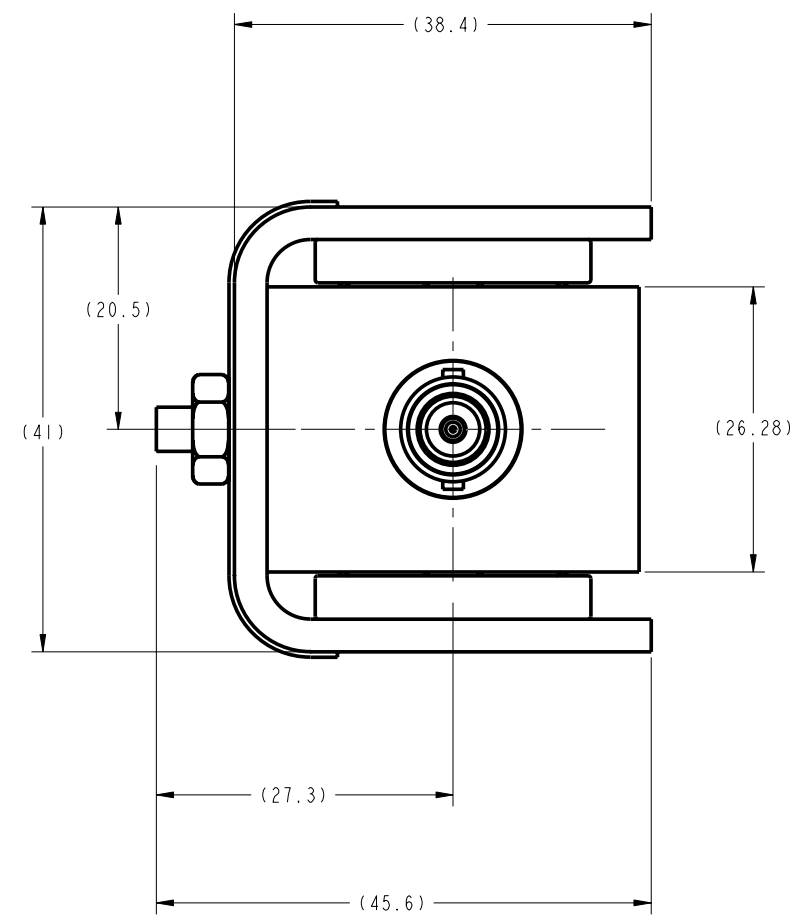


SCALE 2.000



8-32 UNC STUD

(48.12)



(38.4)

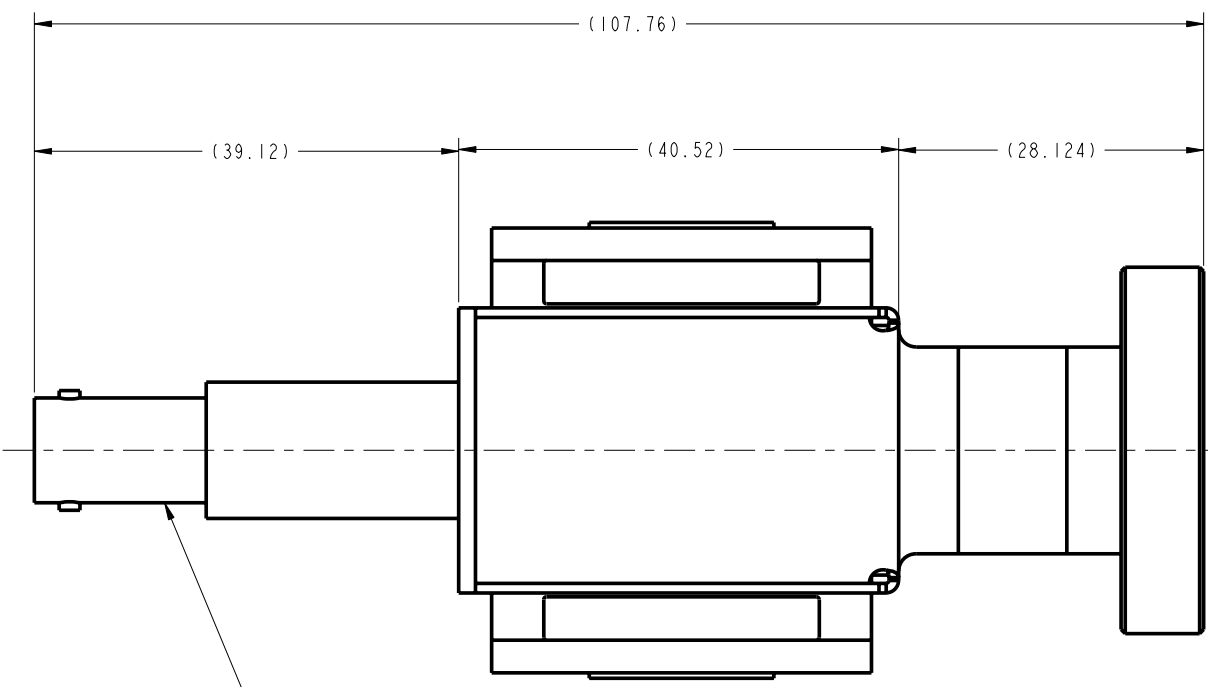
(20.5)

(41)

(26.28)

(27.3)

(45.6)



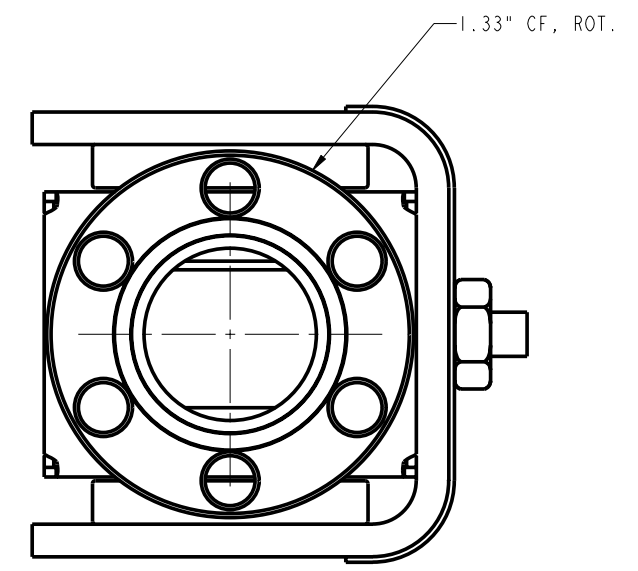
(107.76)

(39.12)

(40.52)

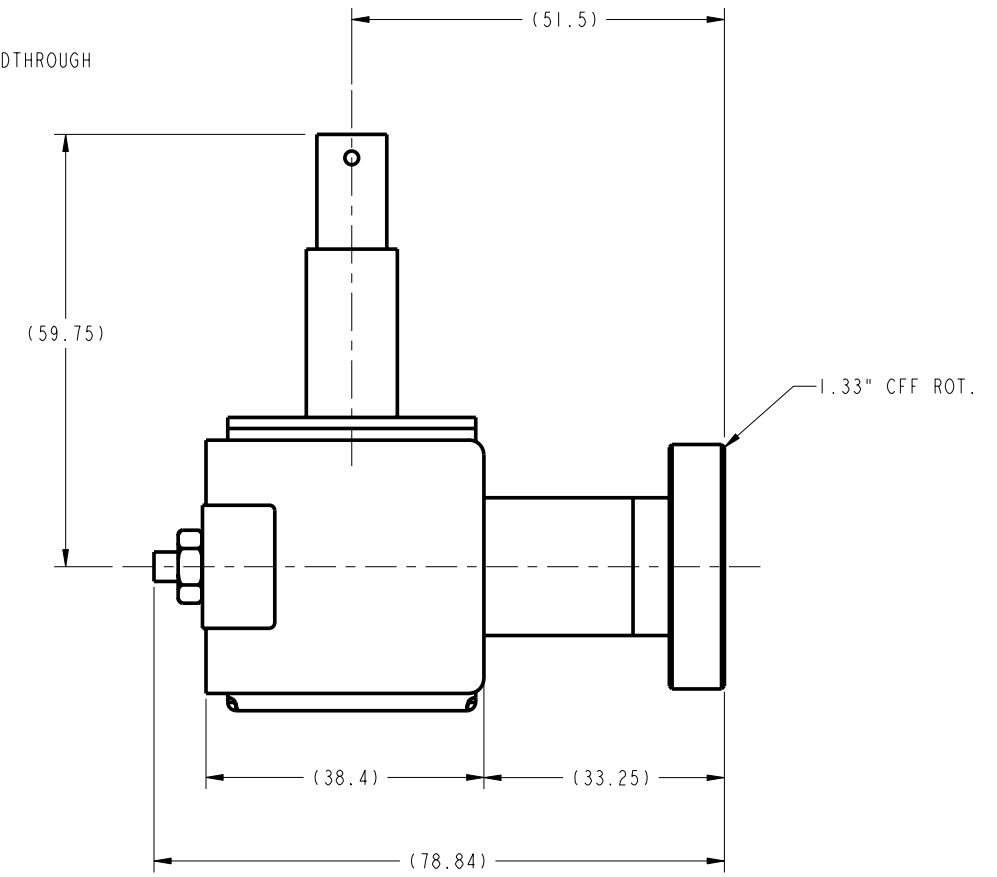
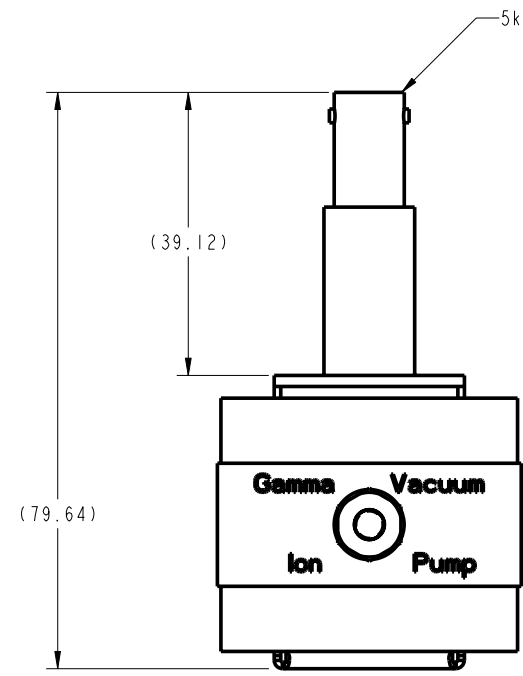
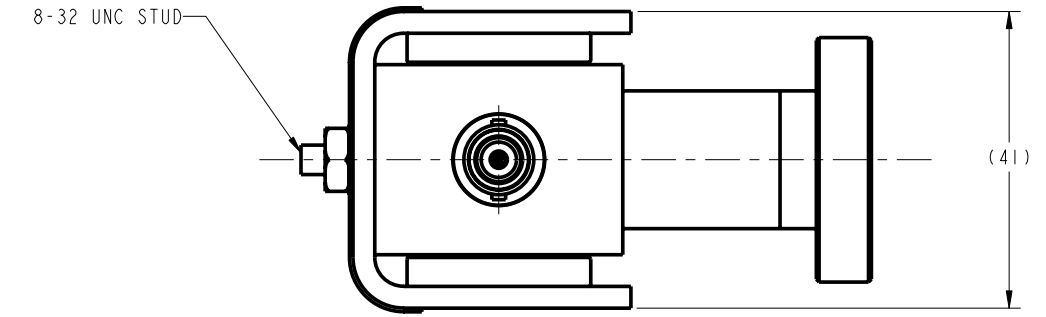
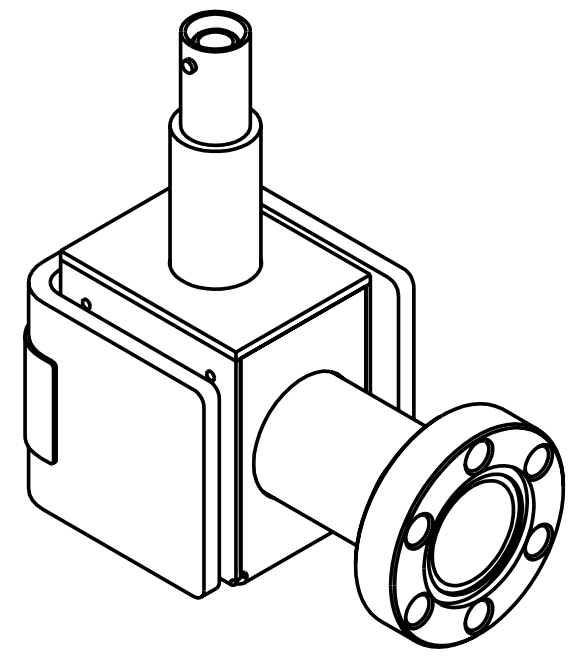
(28.124)

5KV/5A SHV FEEDTHRU



1.33" CF, ROT.

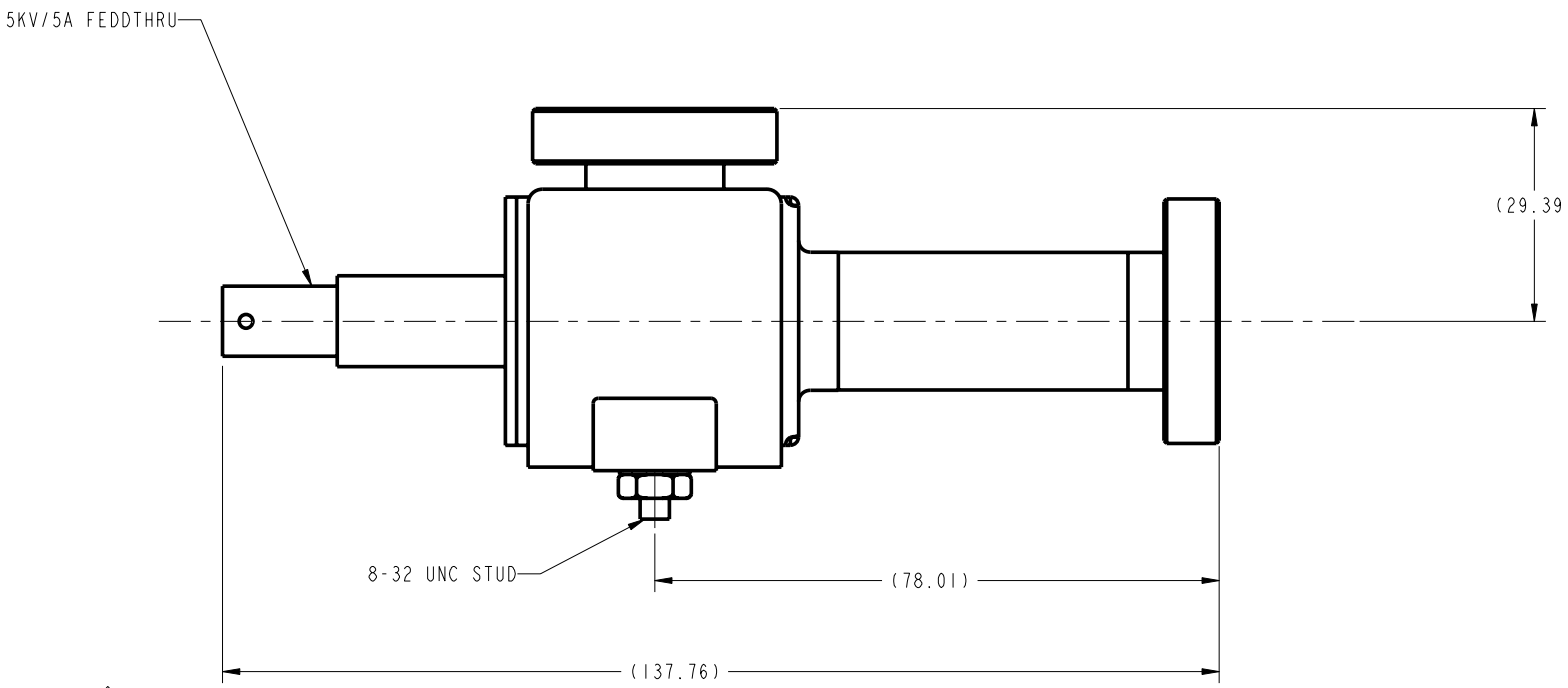
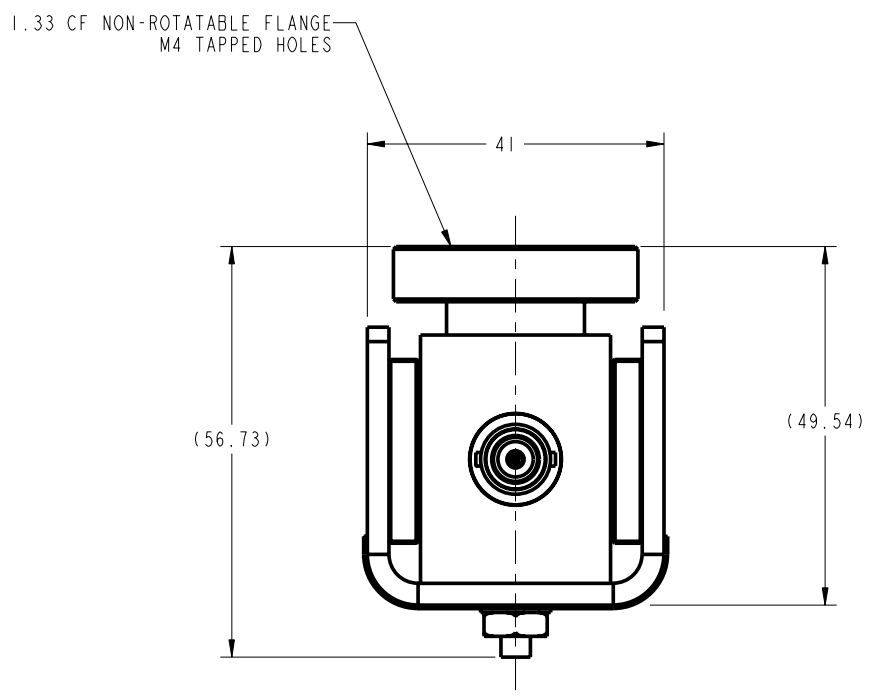
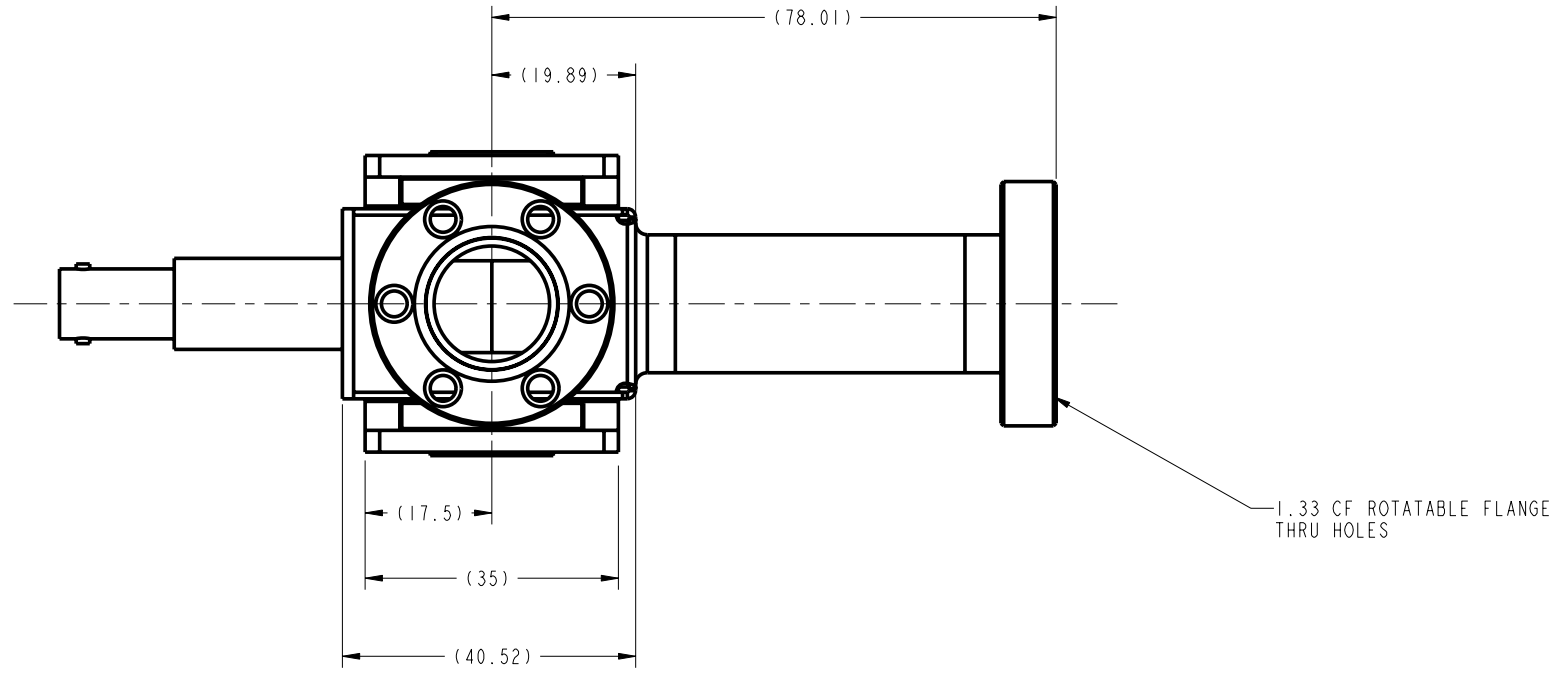
<p>METRIC</p> <p>THIRD ANGLE PROJECTION</p>	<p>UNLESS OTHERWISE SPECIFIED: DIMENSIONS ARE IN MILLIMETERS SURFACE ROUGHNESS IN MICROMETERS</p> <p>TOLERANCES: LINEAR ±0.13 HOLES ±0.13 ANGULAR (±)</p> <p>MACHINED 0.5° FORMED 1° CHAMFER 5°</p> <p>MACHINED SURFACES 1.6</p> <p>BREAK SHARP EDGES: R.2 OR 45° 0.2 MAX. INTERNAL MACH CORNER R.4 MAX.</p>	<p>DRW R GOLLA DATE 11-02-05</p> <p>CHK MHC DATE 1-02-05</p> <p>APPV RDG DATE 1-02-05</p> <p>RT RDG</p> <p>TOLERANCING AND DIMENSIONING PER ANSI Y14.5M - 1982</p> <p>THIS DRAWING CONTAINS PROPRIETARY INFORMATION AND ANY REPRODUCTION, DISCLOSURE OR USE OF THIS DRAWING IS EXPRESSLY PROHIBITED EXCEPT AS AGREED TO IN WRITING.</p>	<p>Gamma Vacuum 12912 Ventura Court, No. 28 • Shakopee, MN</p> <p>TITLE 3S-CV-1H-5K-N-N</p> <p>SIZE DRAWING NO. 360086 REV. A</p> <p>SCALE 3.000 DETACHED <input type="checkbox"/> PL <input type="checkbox"/> SPEC SHT 1 OF 2</p>
--	--	---	---



METRIC THIRD ANGLE PROJECTION 	<small>UNLESS OTHERWISE SPECIFIED: DIMENSIONS ARE IN MILLIMETERS SURFACE ROUGHNESS IN MICROMETERS</small>	<small>DRW: R GOLLA DATE: 11-02-05 CHK: MHC DATE: 11-02-05 APPV: RDG DATE: 11-02-05 RI: RDG</small>	Gamma Vacuum 12912 Ventura Court, No. 28 • Shakopee, MN
	<small>TOLERANCES: LINEAR ±0.13 HOLES ±0.13 ANGULAR (±) MACHINED 0.5° FORMED 1° CHAMFER 5° MACHINED SURFACES 1.6 BREAK SHARP EDGES: R. 2 OR 45° 0.2 MAX. INTERNAL MACH CORNER R. 4 MAX.</small>	<small>TOLERANCING AND DIMENSIONING PER ANSI Y14.5M - 1982</small>	<small>THIS DRAWING CONTAINS PROPRIETARY INFORMATION AND ANY REPRODUCTION, DISCLOSURE OR USE OF THIS DRAWING IS EXPRESSLY PROHIBITED EXCEPT AS AGREED TO IN WRITING.</small>
		SIZE DRAWING NO. 360084 REV. B	SCALE 2.000 DETACHED <input type="checkbox"/> PL <input type="checkbox"/> SPEC SHT 2 OF 2

DWG. NO. 360088		SH. 1	REV. A
REVISIONS			
REV	CO #	DESCRIPTION	DATE
A	10.871	RELEASE-	11-07-05

THIS DRAWING HAS BEEN GENERATED AND IS MAINTAINED BY PRO/ENGINEER CAD SYSTEM.



- NOTE:
1. INDICATED WELDED JOINTS AND MATERIALS TO BE VACUUM TIGHT TO A SENSITIVITY OF 1×10^{-9} CC/SEC He @ STP.
 2. INDICATED WELDS ARE TO BE FULL PENETRATION WELDS. BACKFLOW ARGON THRU PUMP BODY DURING WELDING.
 3. INSTALL MAGNETS WITH OPPOSITE POLES FACING (ATTRACTING) EACH OTHER. MAGNETS ARE TO BE CENTERED AND PARALLEL WITH EDGES OF FLUX PLATE. SECURE MAGNETS TO BRACKET WITH ADHESIVE (ITEM 21).
 4. PERMANENTLY SCRIBE SERIAL NUMBER IN AREA SHOWN.
 5. SPOT WELD TUBES AND TUBE SUPPORT PLATE TOGETHER PER ELEMENT MANUFACTURING PROCESS. THESE PARTS MUST BE KEPT CLEAN.

METRIC	UNLESS OTHERWISE SPECIFIED: DIMENSIONS ARE IN MILLIMETERS SURFACE ROUGHNESS IN MICROMETERS		DRW R GOLLA	DATE 11-07-05	Gamma Vacuum 12912 Ventura Court, No. 28 • Shakopee, MN
	TOLERANCES: LINEAR ±0.13 HOLES ±0.13 ANGULAR (±)		CHK MHC	DATE 11-07-05	
THIRD ANGLE PROJECTION		MACHINED 0.5° FORMED 1° CHAMFER 5°	APPV RDG	DATE 11-07-05	TITLE 3S-D1-2H-5K-N-N
		MACHINED SURFACES 1.6 BREAK SHARP EDGES: R. 2 OR 45° 0.2 MAX. INTERNAL MACH CORNER R. 4 MAX.	RI RDG		SIZE DRAWING NO. 360088
<p>THIS DRAWING CONTAINS PROPRIETARY INFORMATION AND ANY REPRODUCTION, DISCLOSURE OR USE OF THIS DRAWING IS EXPRESSLY PROHIBITED EXCEPT AS AGREED TO IN WRITING.</p>			<p>TOLERANCING AND DIMENSIONING PER ANSI Y14.5M - 1982</p>		REV. A
			<p>SCALE 2.000 DETACHED <input type="checkbox"/> PL <input type="checkbox"/> SPEC SHT 1 OF 2</p>		